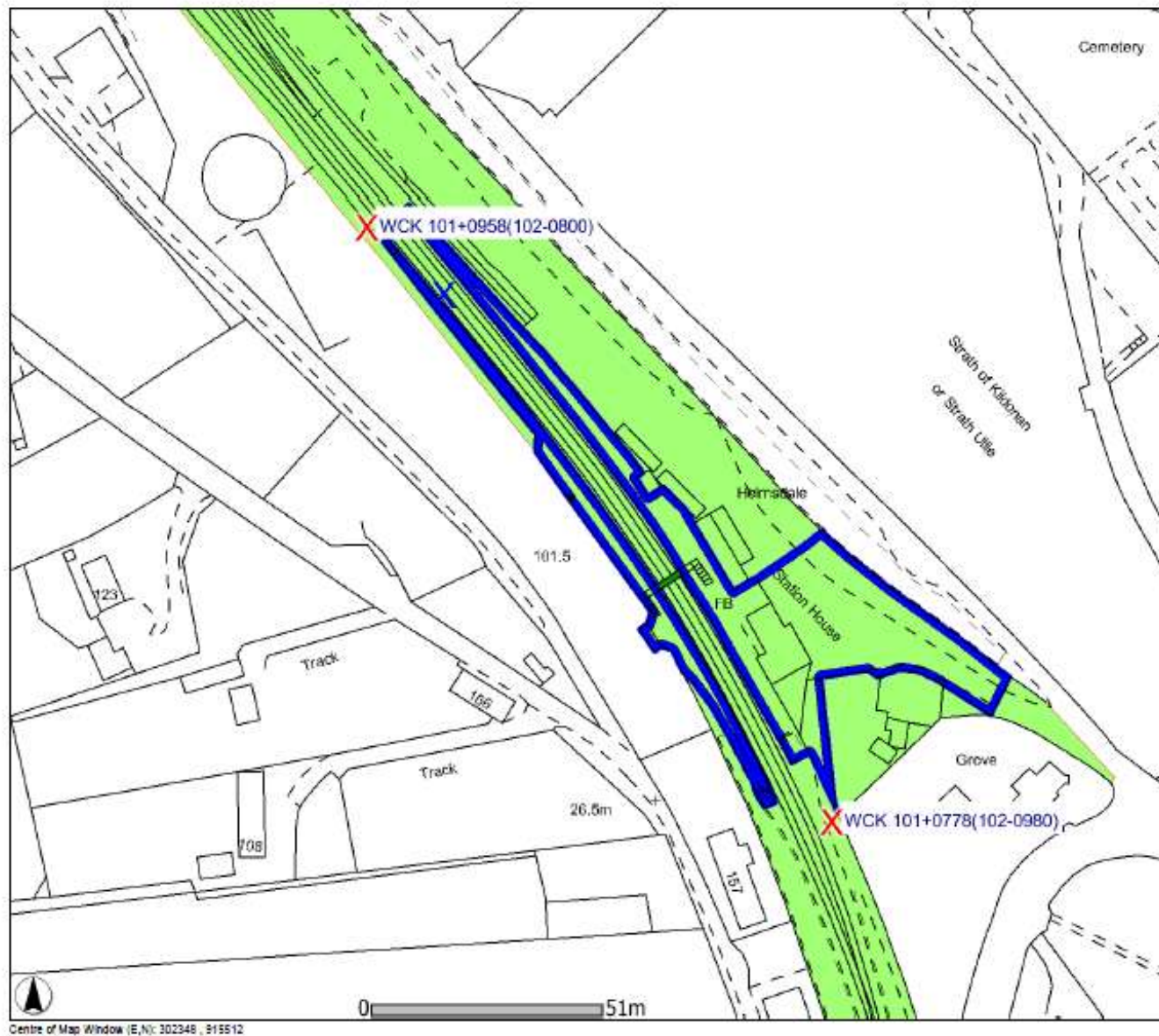


Helmsdale Station Building

Photographic Record, March 2013

Notes

1. All photographs taken between 12.00 and 14.30 on 20/03/2013 unless otherwise stated.
2. See the location plan of the building (fig 1 below); the platform and building is orientated NNW – SSE. For simplicity the walls of the building in the captions below are referred to as north, south east and west (north, in fact being NNW etc).
3. The floor in some ground floor rooms (toilet off waiting room, store and office) is extremely rotten and dangerous. The photographic record in these rooms is limited by safety considerations.
4. The sequence of photographs in each area, and around the exterior, moves round in a clockwise direction followed by any ceiling or floor features and the furnishings and fittings (if any). The only exception is the office where the room sequence (to aid interpretation) is anticlockwise.
5. Location numbers, #1, etc are marked on the floor plans, fig 4 & 5. These are also included on the disk in a separate floor plan .pdf document to aid printing if required for reference.
6. The construction of the building is, unusually for 1871, shuttered solid concrete of approximately 11inches thickness for external walls. An inside image of the bare concrete can be seen in pic 19.
7. The building is part of a category B listed group together with the footbridge and platform signal box (shown in pics 120 & 121)
8. In the office and store it will be seen that an amount of station office furniture remains in various states of repair. Where possible it is the intention of Helmsdale Station CIC to restore this furniture and to incorporate it in the furniture and fittings of the restored building. Pictures of these are limited because of the hazard of the rotten floor in both rooms.
9. © Michael Willmot unless otherwise acknowledged



Reproduced from the Ordnance Survey Map with permission of the controller of Her Majesty's Stationery Office. Crown Copyright. Licence No: 0100040692

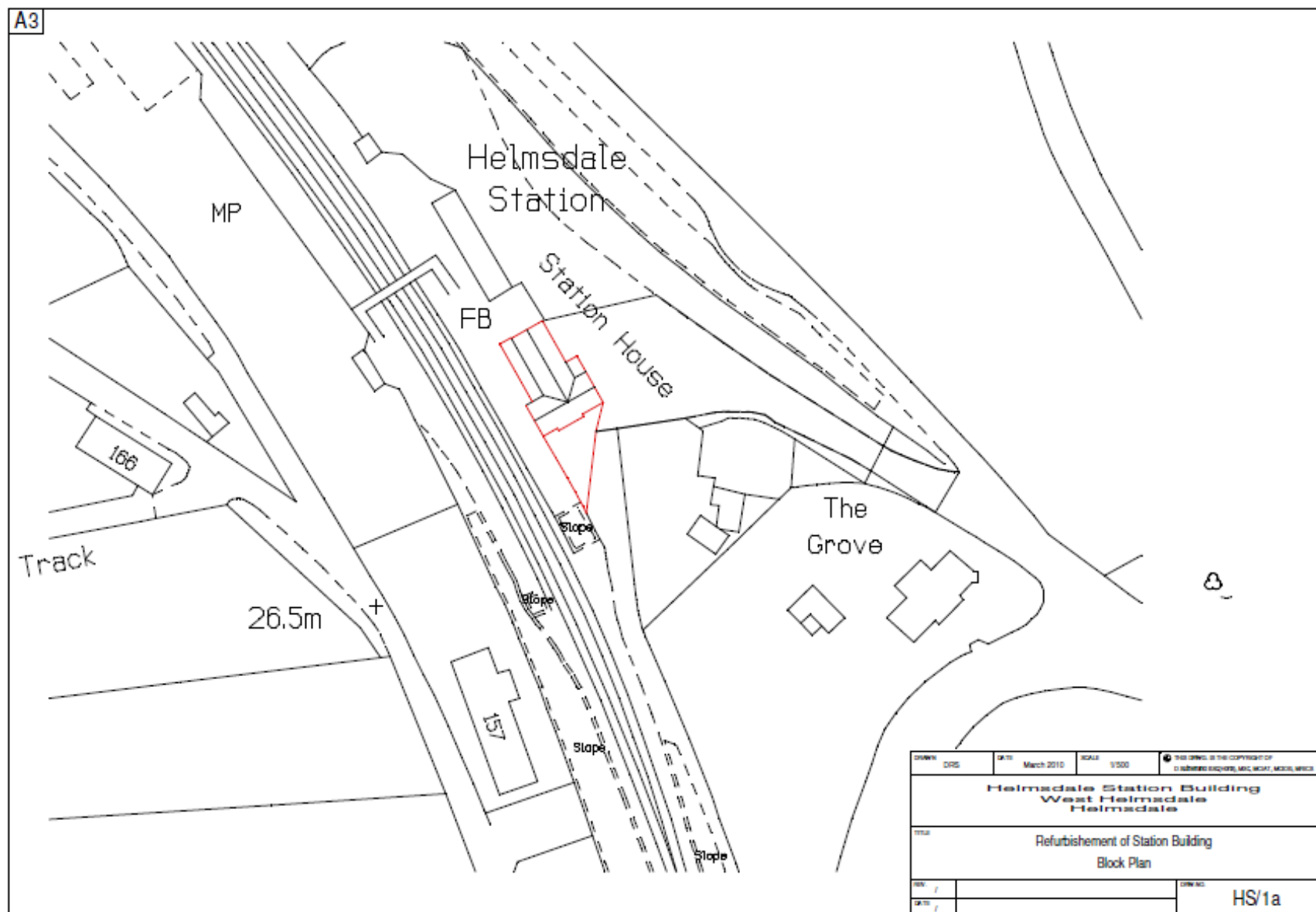
HELMSDALE STATION MILEAGE

Plot Scale	1:1250
Plot Date	13/2/2013

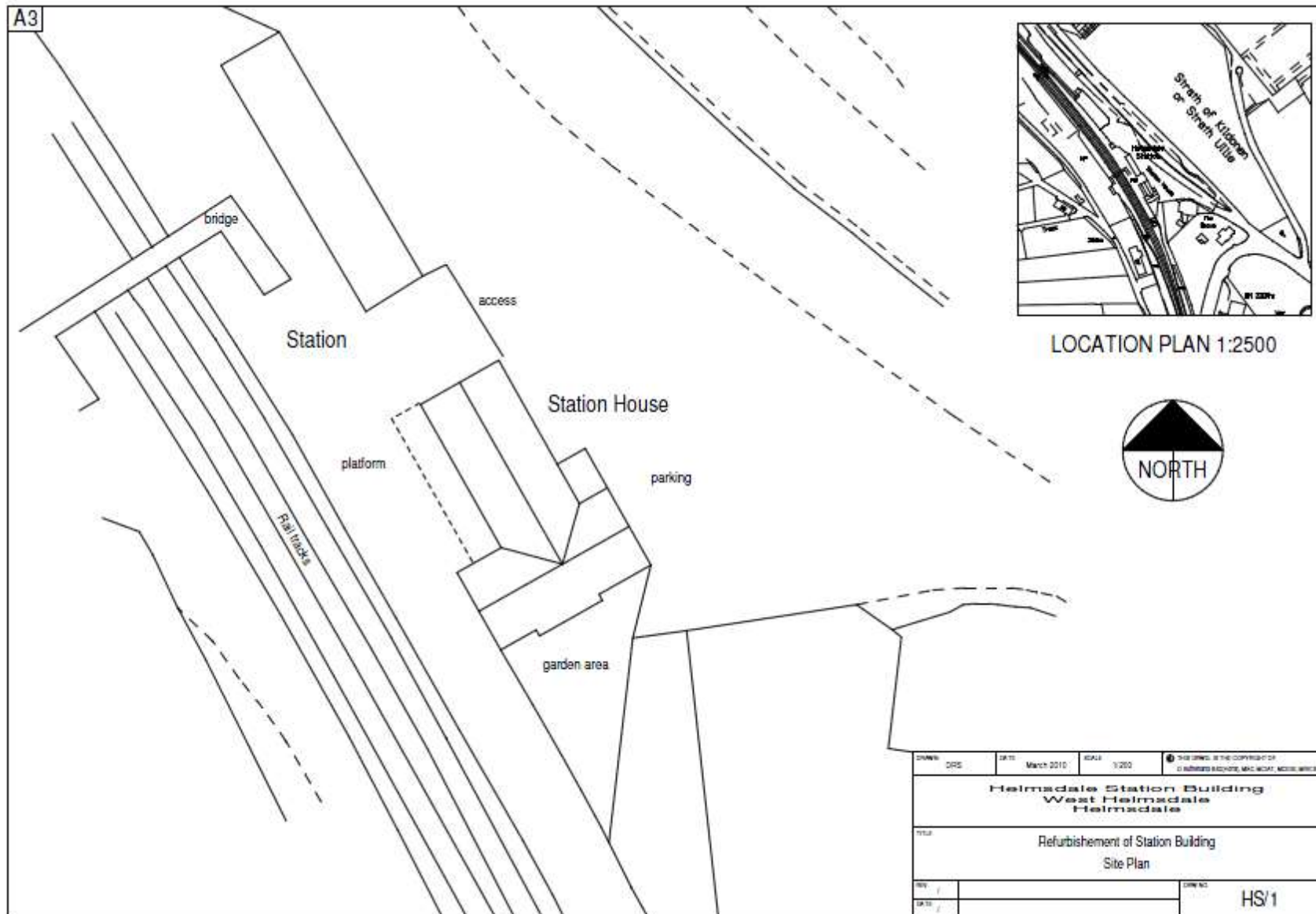


Output Created from the GI Portal - A4 Landscape

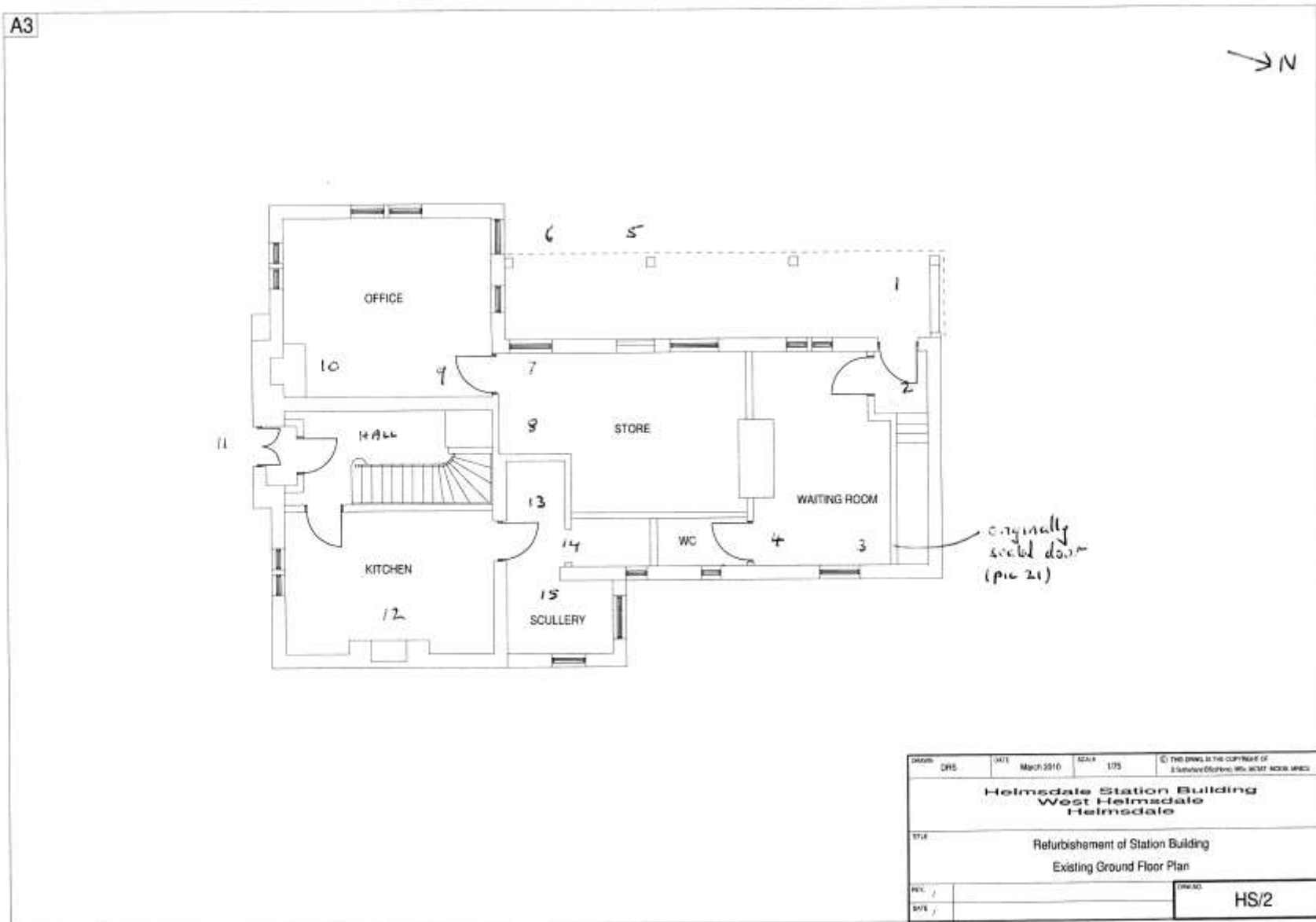
1. Location of Helmsdale station building ("Station House")



2. Plan showing boundaries of lease on Helmsdale station building

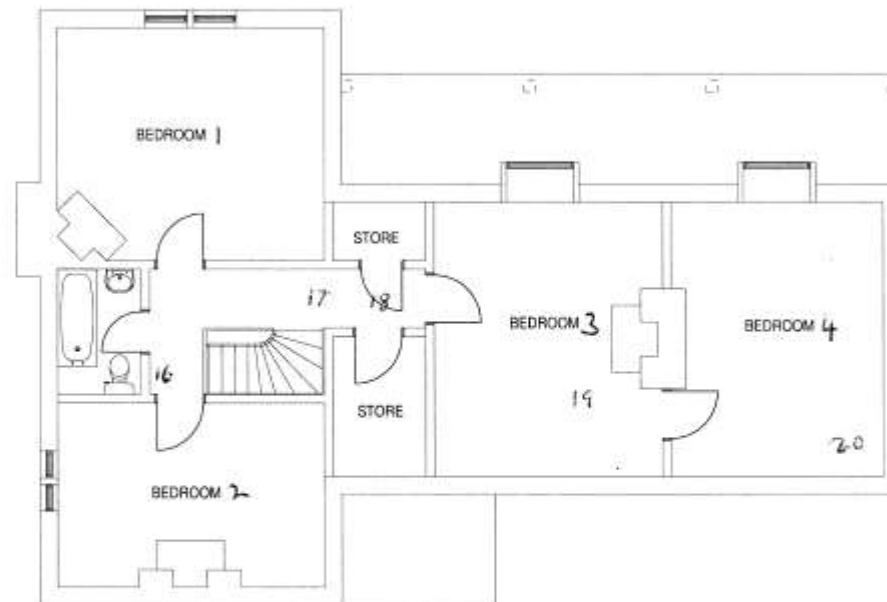


3. Site plan



4. Existing ground floor plan with locations referred to in photo captions

A3

 N


Drawn	CRS	DATE	March 2010	SCALE	1/75	© THIS DRAWING IS THE COPYRIGHT OF D. Schindler Architects, 185c, MCAT, MCKIN, MCKIN
Helmsdale Station Building West Helmsdale Helmsdale						
TITLE Refurbishment of Station Building Existing First Floor Plan						
REV.	1					DRWNO
DATE	1					HS/3

5. Existing first floor plan with locations referred to in photo captions



6. General view of station building from the north west (taken 29 November 2008, 14:13)



7. West elevation



8. West elevation: detail of canopy roof and dormer windows



9. West elevation: detail of upper gable end window, showing blank recess for “Highland Railway” crest and old lamp fitting



10. North gable end elevation showing blank recess for "Highland Railway" crest



11. East elevation



12. East elevation showing detail of scullery annexe, added at unknown date. Behind the damaged render it can be seen that this is brick built, unlike the concrete construction of the rest of the building.



13. South elevation from the east (overgrown garden and trees prevents view at right angles to this elevation)



14. South elevation from the west (overgrown garden and trees prevents view at right angles to this elevation)



15. Detail of chimney stack, south elevation



16. Door under platform canopy into waiting room (#1)



17. Doorway (at one stage sealed) to staircase inside waiting room lobby, #2



18 Stair case now blocked at top (see note above)

This narrow staircase led to the room above which was believed to have been the second (or third) class waiting room – now bedroom 4.

An account of passengers being stranded in a blizzard at Helmsdale in the 1890s (?) report a petition from second class passengers to the station master to join the first class passengers in their waiting room where there was a fire. This was only permitted after 8 (?) hours of waiting.

Kick marks on the risers suggest considerable use at some stage with not protective covering of the woodwork.

The room upstairs which became bedroom 4 in the stationmaster's accommodation has no fireplace. The skirting board is the plainest of any room in the building (see pics 115 – 119).

In recent years when the downstairs waiting room was in use, the door at the bottom of the stair case was sealed off behind a plaster skimmed fabric (pics 17 & 20).



19. North stairs provide the best view of the concrete external wall



20. Door to the north stairs



21. Doorway (at one stage sealed) to under stair cupboard in waiting room



22. View inside under stair cupboard



23. Door to under stair cupboard and east window of waiting room



24. West window of waiting room and door to waiting room lobby (#2)



25. Waiting room fireplace



26. Waiting room cornice



27. Waiting room ceiling showing ducted electric cables and outline of lost over mantle / mirror



28. Waiting room skirting



29. Toilet door off SE corner of waiting room (# 4)



30. Looking in to off-waiting room toilet (rotten floor prevents access, but note aluminium wash basin behind door)



31. Although toilet has been removed, cistern remains



32. Blocked up door under canopy to store (#5). Although marked as store on the plan, the room beyond was once the stationmaster's office



33. View under canopy from north end (#1)



34. Office window, north facing, outwith canopy (#6). Remarkably the only access route to the office and the store!



35. In both the office and the store, the suspended floors are rotten and very hazardous. This has restricted the photos in these two areas.



36. Steel window frame at south end of store from the inside (#7)



37. Blocked up door and north end of store from the inside



38. The door from the now blocked up store doorway remains inside the store room



39. Another view of the store door, old timetable (dated 2000) noticeboard and fireplace in store room (all photos had to be taken from one location because of the dangerous floor)



40. Old door frame has been cut up (and it has fallen through the floor!)



41. Store: pigeon hole cupboard and poster cases against the east wall



42. Cupboard of corroding British Rail batteries against the south wall (#8). It is believed that there was a door behind leading from the store (stationmaster's office) to the entrance hall or the stationmaster's house



43. Cornice in store (Stationmaster's office, west wall); the only room in the building with a decorative cornice apart from the (first class waiting) room. See pic 26



44. Cornice in store (Stationmaster's office, north wall).



45. Cornice in store (Stationmaster's office, termination in south wall).



46. View through door from office to store showing desk beyond (#9)



47. Windows in north wall of office (from #9). Further window is the only means of access



48. Counter, cupboards, safe and rotten floor below north windows in office



49. Window in office and outline of clock case on west (platform facing) wall



50. The outside view corresponding to the inside view in pic 49



51. South window in office and outline of clock case on west wall. Sink removed.



52. Location of stove in SE corner of office (#10)



53. Safe (the second safe in this room) in SE corner of office



54. Cupboard against west wall of office



55. Rotten floor reveals hole under west wall. There was once a point or signal lever in the office with under platform tunnel for trackside connection



56. Detail of under floor well shown in pic 55.



57. Double sided clerks' desk from #9



58. Low desk in SW corner of office (full view prevented by rotten floor)



59. Skirting in office (#9)



60. Outside doors to residence, south end (#11)



61. Internal view of outside doors to residence



62. Internal door leading to small lobby with external doors beyond



63. Internal door shown in pic 62 open



64. Staircase newel post



65. Stairs in residence



66. Stove & oven in kitchen (#12)



67. Alcove to left of kitchen chimney breast



68. Alcove to right of chimney breast showing cupboards and hot water cylinder heated by adjacent kitchen stove



69. Window in south wall of kitchen



70. Door into hall from kitchen – kitchen side



71. Door into hall from kitchen – hall side. All internal doors are of this type except bathroom door with glazed panels and door between bedrooms 3 & 4



72. NW corner of kitchen showing door to cupboard under stairs on left and door through to scullery on right. Strangely this scullery access door is only 6 foot high and lower than the cupboard door



73. Kitchen cupboard under stairs



74. Under stair cupboard showing possibly original floor tiling



75. Kitchen door open leading to scullery



76. Scullery storage area – west side (#13)



77. Scullery storage area – north side (#14)



78. Scullery annexe, NE corner (#15). This part is within the small annexe shown from the outside in pic 12.



79. Scullery annexe, SE corner (#15)



80. Scullery annexe, SE corner, detail of floor and skirting



81. Looking south from scullery into kitchen (#14)



82. Stairs from hall



83. Stairs looking south onto upper landing



84. Upper landing, looking south into bathroom and bedroom 2 (04/08/09, 14.27)



85. Change of skirting where upper landing meets stairs



86. Electrical distribution board on south wall of landing (#16)



87. Bedroom 2, SE corner



88. Bedroom2, NW corner



89. Bedroom 2, cast iron fireplace (same model of fireplace in bedrooms 1 & 3)



90. Bedroom 2, skirting and wallpaper



91. Bathroom door from landing



92. Bathroom, east end



93. Toilet cistern



94. Bathroom, west end



95. Bathroom, cold water tank above basin, west end



94. Bathroom skylight (above bath)



97. Bedroom 1, angled fireplace in SE corner. (In the 1950's it is known that this room was used as a living room)



98. Bedroom 1, fireplace



99. Bedroom 1: angles of walls and ceiling above fireplace (as well as long term roof leak)



100. Bedroom 1, NW corner and window overlooking platform



101. Bedroom1, NE corner



102. Bedroom1, skirting and wallpaper



103. Landing looking north towards bedroom 3



104. Landing skylight at top of stairs (above #17)



105. Storage area off landing outside bedroom 3, west side (#18)



106. Ceiling inside storage area off landing outside bedroom 3, west side



107. Storage area off landing outside bedroom 3, east side (#18)



108. Ceiling inside storage area off landing outside bedroom 3, east side, showing access hole made into roof space



109. Looking out of storage area east, off landing outside bedroom 3 across corridor to door of storage area west



110. Bedroom 3 window with (badly deteriorated) Bible on sill



111. Bedroom 3 showing standard cast iron fireplace and connecting door to bedroom 4 in NE corner (#19)



112. Bedroom3, fireplace



113. Bedroom 3, view through to landing



114. Bedroom 3, skirting



115. Bedroom 4, window (overlooking platform)



116. Bedroom 4 Floor in NE corner above blocked off stair case outside waiting room (see pic 18). No sign of access 'patch' indicating whole floor must have been replaced since stair access was blocked off.



117. Bedroom 4, door and chimney breast. No indication that there was ever a hearth in this room. (See note, page 20 concerning suspected original use of this room as second class waiting room)



118. Comparison of interconnecting door between bedroom 3&4 (left, 8 boards with flush frame; viewed from bedroom 3 side) and other standard pattern internal doors (right, 8 wider boards on front to frame) confirming that this door is of a later date



119. Skirting in bedroom 4 (only accommodation room with plain, no moulding, skirting board)



120. Footbridge and signal box which form a category B listed group with the station building



121. Closer view of signal box. Restored and repainted by Network Rail in 2011 (still in use for storage and telecoms equipment)