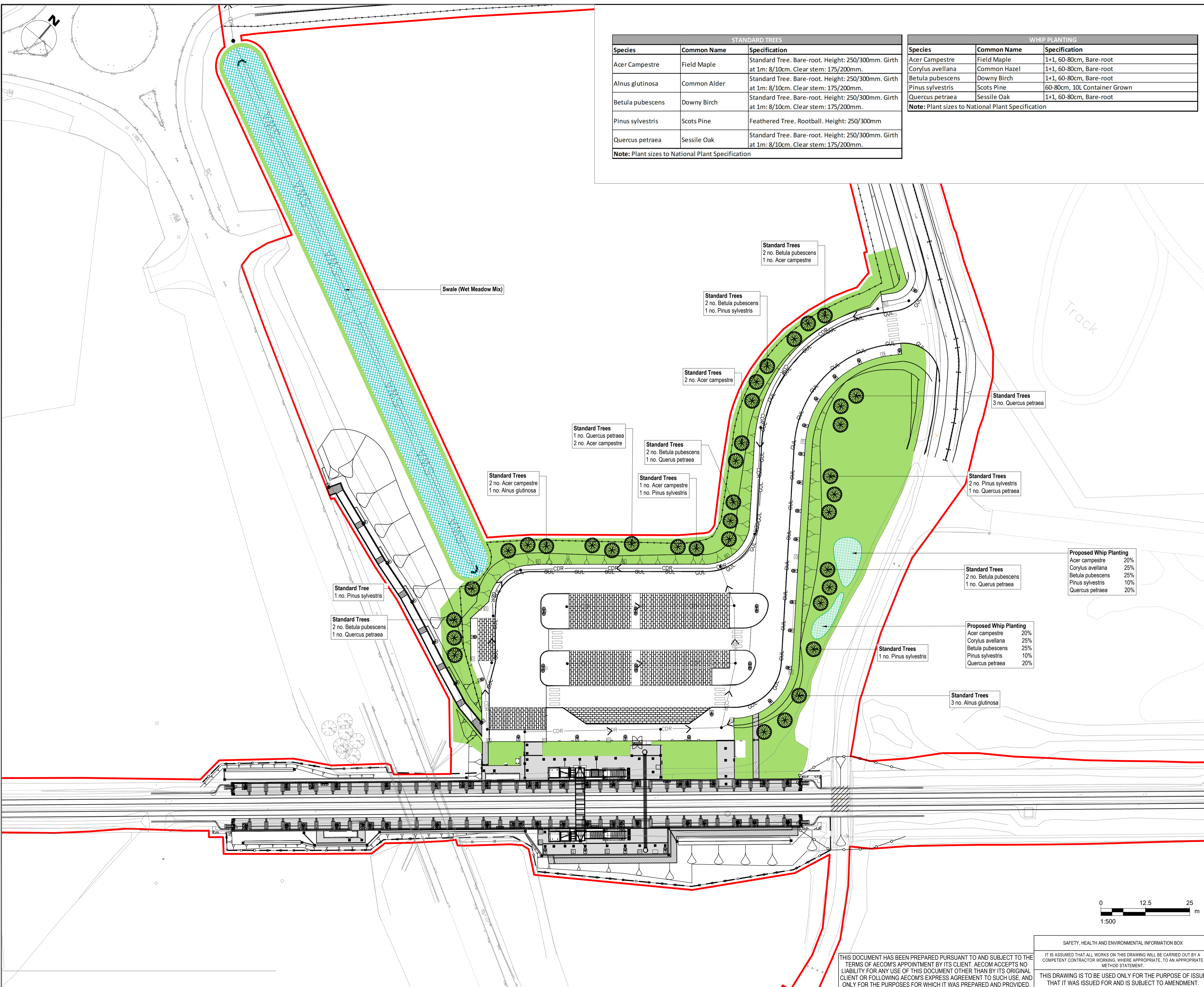


100
0 10
Millimetres

Filename: C:\users\greg.mitchell\documents\sdms084791\50005-BNU-DRG-EEN-001.dwg
Date: 16/10/20 16:20:47
User: greg.mitchell



STANDARD TREES		
Species	Common Name	Specification
Acer Campestre	Field Maple	Standard Tree. Bare-root. Height: 250/300mm. Girth at 1m: 8/10cm. Clear stem: 175/200mm.
Alnus glutinosa	Common Alder	Standard Tree. Bare-root. Height: 250/300mm. Girth at 1m: 8/10cm. Clear stem: 175/200mm.
Betula pubescens	Downy Birch	Standard Tree. Bare-root. Height: 250/300mm. Girth at 1m: 8/10cm. Clear stem: 175/200mm.
Pinus sylvestris	Scots Pine	Feathered Tree. Rootball. Height: 250/300mm
Quercus petraea	Sessile Oak	Standard Tree. Bare-root. Height: 250/300mm. Girth at 1m: 8/10cm. Clear stem: 175/200mm.

Note: Plant sizes to National Plant Specification

WHIP PLANTING		
Species	Common Name	Specification
Acer Campestre	Field Maple	1+1, 60-80cm, Bare-root
Corylus avellana	Common Hazel	1+1, 60-80cm, Bare-root
Betula pubescens	Downy Birch	1+1, 60-80cm, Bare-root
Pinus sylvestris	Scots Pine	60-80cm, 10L Container Grown
Quercus petraea	Sessile Oak	1+1, 60-80cm, Bare-root

Note: Plant sizes to National Plant Specification



- GENERAL NOTES**
- THIS DRAWING IS TO BE READ IN CONJUNCTION WITH ALL OTHER RELEVANT DOCUMENTATION.
 - DO NOT SCALE FROM THIS DRAWING. USE ONLY PRINTED DIMENSIONS.
 - ALL DIMENSIONS IN MILLIMETRES ALL CHAINAGES, LEVELS AND COORDINATES ARE IN METRES UNLESS DEFINED OTHERWISE.
 - THIS DRAWING IS TO BE READ IN CONJUNCTION WITH THE PROJECT HEALTH & SAFETY FILE FOR ANY IDENTIFIED POTENTIAL RISKS.
 - GUIDANCE HAS BEEN TAKEN FROM NETWORK RAIL GUIDELINES, GOOD PRACTICE GUIDE FOR ROADS AND SCOTS GUIDANCE.

- LEGEND**
- PROPOSED STANDARD TREES
TOTAL NO: 36
 - PROPOSED SWALE SEEDED WITH WET MEADOW MIX BY SCOTIA SEEDS OR EQUAL AND APPROVED
TOTAL AREA: 1,670M²
 - PROPOSED NATIVE MEADOW GRASS MGS BY SCOTIA SEEDS OR SIMILAR AND APPROVED
TOTAL AREA: 4670M² AND ANY AREAS DISTURBED DURING CONSTRUCTION
 - PROPOSED WHIP PLANTING
TOTAL AREA: 125M²

NOT FOR CONSTRUCTION

Rev	Date	Issue History	Drawn	Chkd	Appd
A04	16/10/20	ISSUED FOR INFORMATION	CH	GM	NM
A03	11/09/20	FOR PLANNING	CS	JD	CH
A02	24/06/19	ISSUED FOR FORM 001	MB	JD	CH
A01	02/04/19	ISSUED FOR IDC	MB	JD	CH

Description of Change	
FOR ACCEPTANCE	

AECOM
Citypoint 2
25 Tyndrum Street
Glasgow, G4 0JY
Tel: +44 (0)141 354 6000
Fax: +44 (0)141 332 2632



**HIGHLANDS ENHANCEMENTS PROGRAMME
ABERDEEN TO INVERNESS**

**DALCROSS STATION
PROPOSED CAR PARK
LANDSCAPE PLAN**

Drawn	Date	Designed	Date
MB	02/04/19	PT	PT
Checked	Date	Approved	Date
JD	02/04/19	RH	02/04/19

Scale	Location
A1 1:500@A1	DALCROSS STATION

SAFETY, HEALTH AND ENVIRONMENTAL INFORMATION BOX

THIS DOCUMENT HAS BEEN PREPARED PURSUANT TO AND SUBJECT TO THE TERMS OF AECOM'S APPOINTMENT BY ITS CLIENT. AECOM ACCEPTS NO LIABILITY FOR ANY USE OF THIS DOCUMENT OTHER THAN BY ITS ORIGINAL CLIENT OR FOLLOWING AECOM'S EXPRESS AGREEMENT TO SUCH USE, AND ONLY FOR THE PURPOSES FOR WHICH IT WAS PREPARED AND PROVIDED.

IT IS ASSUMED THAT ALL WORKS ON THIS DRAWING WILL BE CARRIED OUT BY A COMPETENT CONTRACTOR WORKING, WHERE APPROPRIATE, TO AN APPROPRIATE METHOD STATEMENT.

THIS DRAWING IS TO BE USED ONLY FOR THE PURPOSE OF ISSUE THAT IT WAS ISSUED FOR AND IS SUBJECT TO AMENDMENT.

150005-BNU-DRG-EEN-001001 A04